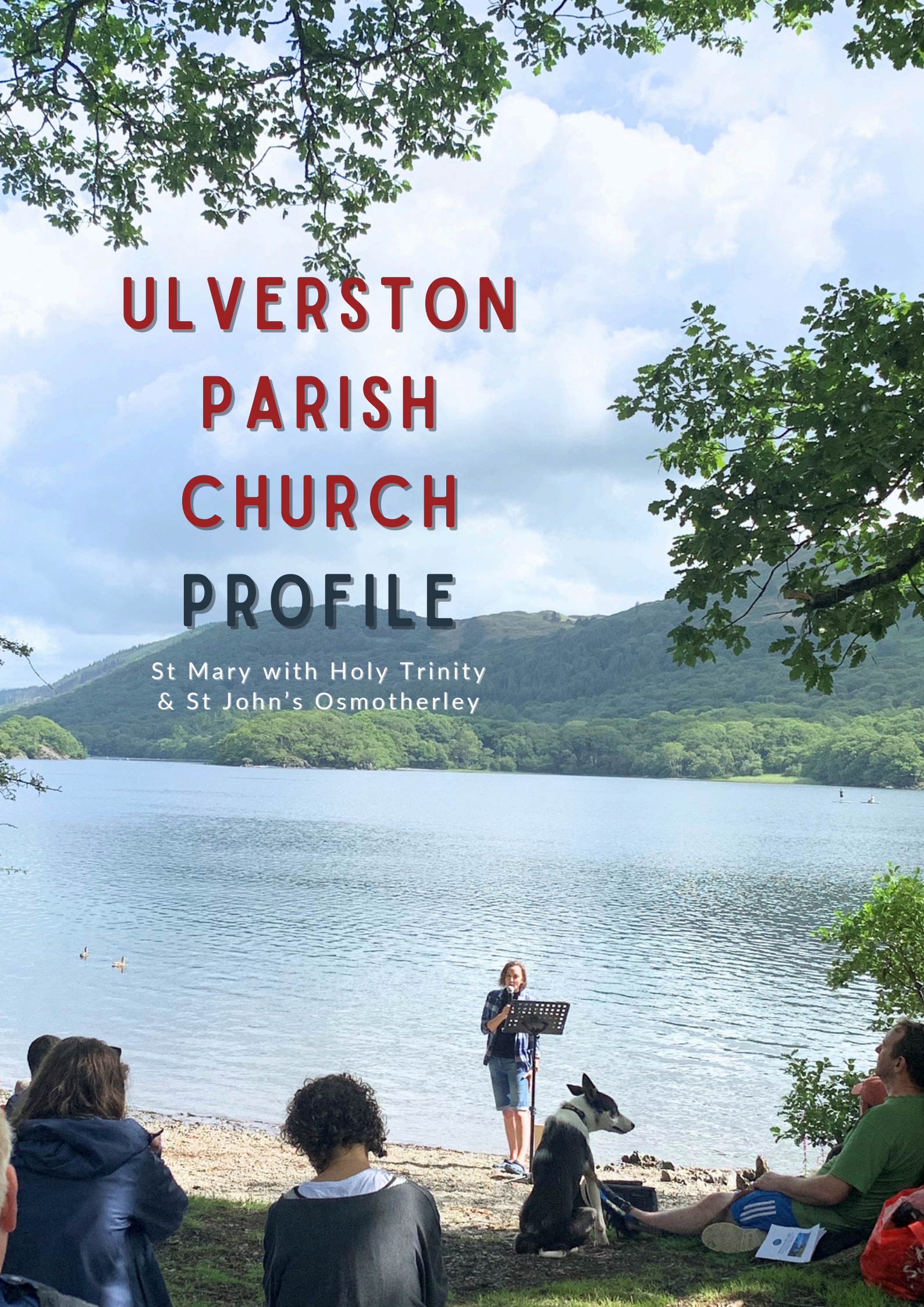


# ULVERSTON PARISH CHURCH PROFILE

St Mary with Holy Trinity  
& St John's Osmotherley



# WELCOME TO UPC

We are an active, thriving church, living our faith, growing our relationship with God and serving our community.

We are a diverse, multigenerational family loving and supporting each other through life's joys and challenges.

We are excited to share our faith with the people of Ulverston and the surrounding villages, and to grow God's kingdom.



## OUR VISION

To be a vibrant, growing church that exists to bring Ulverston to life.

'The desolate land will be cultivated instead of lying desolate in the sight of all who pass through it. They will say, "This land that was laid waste has become like the garden of Eden..." (Ezekiel 36:34-35)

We have also adopted the Carlisle Diocese 'God For All' vision



Follow Daily Care Deeply  
Speak Boldly Tread Gently

Reaching out and helping people to encounter Jesus.

Encouraging people to **Follow Daily** through teaching and discipleship.

Helping our church family to **Speak Boldly** about our faith, **Care Deeply** for the people around us and **Tread Gently** in God's creation.

# WHO WE ARE

- Founded on a belief in Jesus Christ as Lord over all, and in the authority of Scripture, with a broadly charismatic evangelical approach to worship, and links to the New Wine Network.
- A welcoming and friendly church.
- A parish that embraces a variety of worship styles.
- A training parish with a strong track record of supporting curacies and sending workers into full-time ministry.



# WHAT WE OFFER

- A welcoming church family where you will be supported in prayer and ministry.
- A range of worship styles and approaches, from traditional liturgy to informal expressions such as Breakfast Church.
- A committed core staff of Youth, Children and Families Ministers, Administrator and Cleaner.
- A strong team of Lay Ministers and Readers.
- Worship leaders and musicians.
- A parish on the edge of the Lake District National Park.
- Life in the wonderful market town of Ulverston with its many festivals and celebrations.

# CURACY HOUSING

A four-bedroom detached vicarage with large garden is provided in nearby Swarthmoor, a few minutes' drive from the church and local shops and amenities. The house also has good bus links and is walking distance from primary and secondary schools: Pennington CofE Primary (15 minutes) and Ulverston Victoria High School (30 minutes).



# WHERE WE ARE

Ulverston sits just to the south of the Lake District National Park. It is a vibrant community famous for its many festivals, the most notable being the Lantern Festival and the Dickensian Festival. The town comes together and transforms for these events.

Other festivals include the 'Another Fine Fest' Comedy Festival and an International Music Festival.

The town itself boasts many independent shops catering for most needs, as well as small branches of national retailers. Market Street is the cobbled main street, which has many smaller, quirky streets leading off it.

There are four primary schools of varying sizes within Ulverston, including our Church of England school, Church Walk Primary. There is one secondary school, UVHS, which has approximately 1400 students and a sixth form. Ulverston also boasts an excellent Special Educational Needs school, Sandside Lodge, which supports children and young adults.

Ulverston is a thriving town, with the youngest population in the county. There are many activities on offer for children and teenagers, including Scouts, Guides, sports clubs and special interest groups. Ulverston's railway station has regular services to Barrow in Furness then on up the Cumbrian Coast in one direction, and to Lancaster and Manchester Airport in the other.

Barrow in Furness, approximately 10 miles away, is a larger town with big supermarkets, shops and night life. Furness General Hospital is located here and has an A&E department. Other big employers in the area include Siemens and BAE.

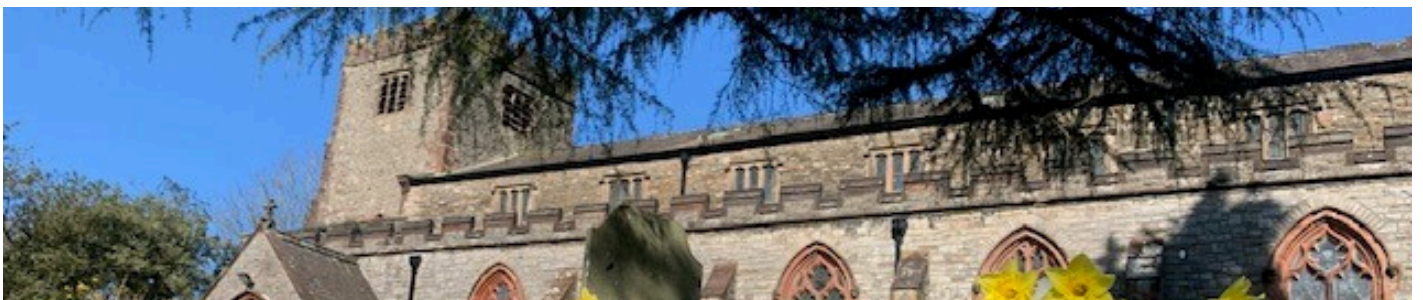


# WHERE WE MEET

There has been a parish church in Ulverston since 1111AD. The mother church, St Mary with Holy Trinity (UPC), is Grade II listed with a Norman arch in the porch and dates primarily from the 19th Century, although the tower is 16th Century.

We also own a church office, which is located over the road at 20 Church Walk. The rectory is a large Victorian house close to the church and Ford Park, and the diocese also owns a vicarage in the neighbouring village of Swarthmoor.

As the only Anglican church in the town, St Mary's attracts people from a broad spectrum of traditions. We have 195 people on the electoral roll and our Sunday 10.30 service currently averages approximately 145 people.



St John's Osmotherley, designed by Austin and Paley, was built in 1874. Located just outside the village of Broughton Beck (3 miles from Ulverston), St John's provides a much appreciated, more traditional service mainly from the Book of Common Prayer.

These go alongside a Rogation service, Harvest Festival, Remembrance Sunday Act of Remembrance and Service of Nine Lessons and Carols, which attract a wider congregation and reach out to the local farming community.

The thriving and committed congregation (averaging 25 at a regular service) share in home groups with the Parish Church. A number of St John's members form the core of the 'Open the Book' team, taking assemblies into local schools.

# WHEN WE MEET

## Ulverston Parish Church (UPC)

### Sunday 8.30am Service

A quiet, reflective, traditional style of worship. It alternates between services of Holy Communion and Morning Prayer using the 'Common Worship' order of service with hymns.

### Sunday 10.30am Service

A contemporary service of Holy Communion, Morning Prayer or All-Age 'Breakfast Church'. Junior Church runs alongside Holy Communion and Morning Prayer services. Refreshments after the service encourage fellowship and relationship building.

### Sunday 6.00pm Café Church

A relaxed, informal space to encounter God, worship, pray, minister and fellowship.

### Wednesday 8.15am Prayer and Pastry

An opportunity to bring our prayers to God and share breakfast together in the north aisle.

### Thursday 10.00am Church, Coffee and Chat

A formal service in the north aisle of the church, using books, followed by a time of fellowship.

## St John's Osmotherley

A traditional service using the Book of Common Prayer, held on the second and fourth Sunday of the month, usually at 3pm.





## HOW WE WORK

### Children and Families Ministry

#### Toddler Group

We host a thriving toddler group over two sessions every Wednesday morning and afternoon, during which a committed team of church volunteers provide a fun and friendly atmosphere.

#### Families in Church

Tots Church and Junior Church groups for children and young people aged 0 to 14 run every Sunday morning, except for when it's Breakfast Church.

#### Breakfast Church

Our monthly Breakfast Church service is a short, fun, Spirit-filled service with breakfast food options on arrival, a baby area and sensory resources.

Our desire is that children feel comfortable in church and enjoy worshipping in a way that is meaningful to them, and the journey towards children taking active and meaningful roles in the services is ongoing. We also offer occasional parenting courses and training events.



## Youth Ministry

Working closely with Furness Network Youth Church (FNYC), we have a monthly rolling youth programme which gives a variety of activities and opportunities to engage with church. With Sunday morning and evening youth groups, and occasional youth services, there is something for everyone aged 11-18. We also encourage young people to join in our services and use their gifts and skills, such as supporting sung worship.

With FNYC we go on an annual weekend away, and we also have one-off events through the year, with a great example being the time we built our very own crazy golf course!

We want to eat more, laugh more and grow together with God. We'd love to grow our youth ministry team to be able to start a mid-week group, run more one-off events, and strengthen our links with the local secondary school.

## Connect Groups

Our Connect Groups are spaces and places where we can be church during the week and out in the world. The groups usually meet in people's homes, where we pray and study the Bible, support each other and enjoy socialising. Each group has a slightly different demographic and character.

## Prayer Ministry

The prayer team, under our prayer coordinator, provide prayer ministry at the 10.30 service and operate our prayer net for both urgent and regular prayer requests.

## Worship Team

Our talented group of musicians meet weekly for practice and provide an eclectic mix of contemporary and traditional worship.



## Alpha

We run Alpha and Youth Alpha regularly, with the most recent courses in late 2023 attracting 16 adults and 14 young people.

## The Lunch Bunch

Our popular Lunch Bunch, which attracts both those from the church family and from the wider community, takes place every few months and gives people the chance to meet together over lunch for fun and fellowship.



## Men's Ministry

Our monthly Pint Night and Men's Breakfast provide a forum for informal fellowship, friendship and evangelism.

## Parish Fellowship

Meeting once a month, the Parish Fellowship share a short act of worship before enjoying talks given by both ecumenical and secular speakers. At various times through the year they join with other similar groups from Ulverston's churches.



## Eco Church Team

The Eco Church Team are passionate about improving our church's care for God's creation. They have done great work developing the biodiversity of our churchyard, and are looking at ways to reduce our carbon footprint. We have Eco Church Bronze status.

## Bell Ringers

A small and dedicated group of bell ringers from both inside and outside the church meet on Monday evenings for practice and ring for the 10.30 Sunday service, special occasions and life events. The group has recently raised the funds to refurbish the bell frame and works.





## THE CHURCH IN THE COMMUNITY

As the town parish church we are in demand for weddings and funerals, and see these as an opportunity to offer love and support to families during significant life events.

Many families come forward to have their children baptised at UPC, most of whom don't initially attend on a Sunday morning but may be involved in the Toddler group, attend family-focused events in the church or have a family connection. Families have a choice between a Baptism or Thanksgiving service, which are offered mainly within our 10.30 Sunday service. We do our best to ensure that everyone is made to feel as welcome and special as possible.

A baptism or thanksgiving bag, containing certificates, an age-appropriate Bible, a candle and a teddy bear, is given to each child.



## Outreach and Community Events

Throughout the year themed community focused events are held in the church building, bringing the church, schools and local community together. Examples include our Pancake Party, Pumpkin Party, Christingle Services, Teddy Bears' Picnic, Movie Nights and Craft sessions. The church is also used for secular events such as Ulverston Music Festival concerts.



## Local Schools

In sight of the church building is Church Walk CofE Primary School, which teaches approximately 100 children. We take regular assemblies at the school, and the children sometimes visit church for nativity services and other celebrations. We also have links with other local schools, who use the church building for tours and visits as part of their RE curriculum.



## Chaplaincy at St. Mary's Hospice

The church has close links with the local St. Mary's Hospice in Ulverston, providing chaplaincy support to patients, families and staff.



## Home Communion

We share Communion at home with those who are unable to join us in the church building.



## Churches in Ulverston

UPC is one of a number of churches that together form one church, regardless of the individual church name or denomination. We are united in the belief that Jesus is 'The Way, The Truth and The Life'. We seek to follow Jesus and to reflect his life-changing message and values. The diversity within the churches brings a richness to our town as we all seek to be channels of blessing. Church leaders meet regularly to pray and share ideas for mission.



## Furness Mission Community

Furness Mission Community is an ecumenical initiative between the Anglican, Methodist and Salvation Army Churches which aims to work together for the common good, so that people of all ages may come to know Jesus and follow Him.



## UPC Mission Partners

UPC has a vision to financially support others in their ministries, so we have a variety of mission partners.



CMS  
 Rwanda Direct  
 Scripture Union  
 New Wine  
 St Mary's Hospice  
 Church Walk School  
 CPAS  
 Alpha ReSource  
 Church Army A Rocha



# FINANCES

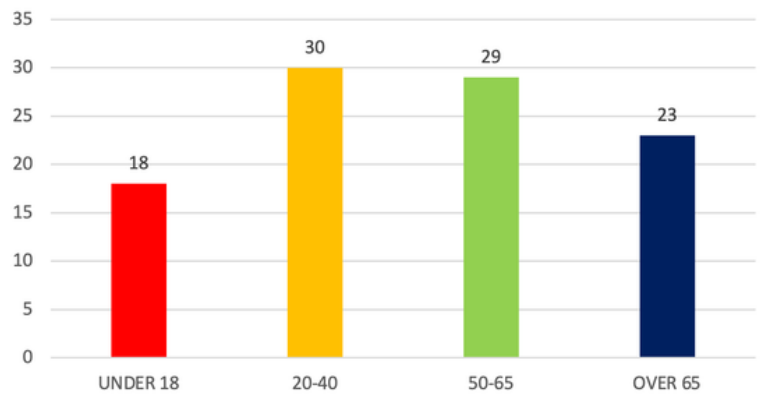
The generous giving of the church family makes possible the life, ministry and mission of our church, and without it we could not be a living church, serving our community. We do not receive any income from the national Church of England; all that we spend comes from our church congregations, with small amounts from grants and fees. In 2025 our total income, including restricted funds, was £242,512 against total expenditure of £254,608.

Looking forward we want to focus on bringing life to the town of Ulverston and using all our gifts, including money, to this end. We are seeing growth in our numbers at services, particularly among young families, and in our youth work.

# CHALLENGES

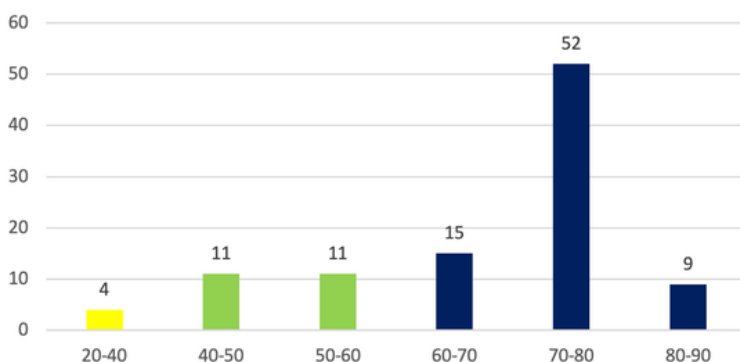
The age demographic of the church doesn't reflect the population of Ulverston, so we need to find ways to bring more young families and children into fellowship.

ULVERSTON POPULATION



|   |        |
|---|--------|
| Parish population (2021 census)             | 11,873 |
| Parish number of occupied households        | 5,437  |
| Area (square miles)                         | 8.5    |
| Population density (people per square mile) | 1,388  |
| % White ethnicity                           | 98.5   |
| % Christian                                 | 67.3   |

UPC POPULATION  
(By giving profile)



Our buildings need work to make them suitable for the changing needs of the church and community. The estimated cost of our Restoration Mission exceeds the funds we have available.

### Parish Church

This is a grade II listed building which has significant issues that need to be addressed. However, the challenge is being met through our plans to refurbish the building to make it fit for purpose.



### Parish Office

The administration of the church is delivered from our separate office close to the church and car park. We are examining how we can use the space more creatively and flexibly as part of the aim of making all our buildings fit for mission.



We have an aspiration to be carbon neutral by 2030, so are looking at ways we can reduce our impact on the planet by conserving energy, reducing waste and increasing our biodiversity.



# WHAT WE ARE SEEKING

A dedicated Christian who is rooted in God's word and receptive to the work of the Holy Spirit in their own life and that of the church.

A wholehearted disciple of Christ, eager to learn more about God, the work of His church and the community they are a part of.

A person who has a heart for people and mission and who can help guide the church into the next part of God's plan for our fellowship and community.

A person of prayer, a team player, adaptable, teachable and with a desire to grow.

Someone who values and encourages the gifts and ministries of the church family.



# TRAINING INCUMBENT

I have been Rector of Ulverston since November 2022, having previously served here as curate. It's a fantastic place to minister. My focus in these first few years has been to set the vision for our churches, refresh church life and ministry, and build up our relationship with the town and its networks of people. Working with me, you'll get a rich and broad experience of the various Anglican traditions (BCP, BCW, charismatic...) and the opportunity to shape church life and culture at a critical stage in our story. But also, crucially, you'll enjoy a Christ-centred, dynamic, prayer-full working relationship. My passion is to bring people of all ages to Jesus, and for God's church to grow, spiritually and numerically. I trained for ordination at St Mellitus College (MA:TMM) and previously studied at Regent College Canada (MA: Theological Studies) and Newcastle University. I'm married to James and we have three children in high school. We love exploring the great outdoors. I also play Roller Derby for the local league. It has to be mentioned(!)

**Rev. Madi Simpson**





## CONTACT INFORMATION

Ulverston Parish Church  
St John's Osmotherley

For an informal discussion and further information, please contact:

Ulverston Parish Church  
20 Church Walk  
Ulverston, Cumbria  
LA12 7EN

Tel: 01229 588081

Email: [office@ulverstonparishchurch.org](mailto:office@ulverstonparishchurch.org)

Web: [www.ulverstonparishchurch.org](http://www.ulverstonparishchurch.org)

UPC Churchwardens:

Rachel Craig: [churchwarden1@ulverstonparishchurch.org](mailto:churchwarden1@ulverstonparishchurch.org)

Helen Huck: [churchwarden2@ulverstonparishchurch.org](mailto:churchwarden2@ulverstonparishchurch.org)

For formal applications please contact:

Diocesan Director of Ordinands and Vocations, Rev Dr Raewynne Whiteley:  
[directorofordinands@carlisle-diocese.org.uk](mailto:directorofordinands@carlisle-diocese.org.uk)